

## AirHandle – the Ultimate Balancer

Follows your hand's movement, enabling fingertip precision lifting.

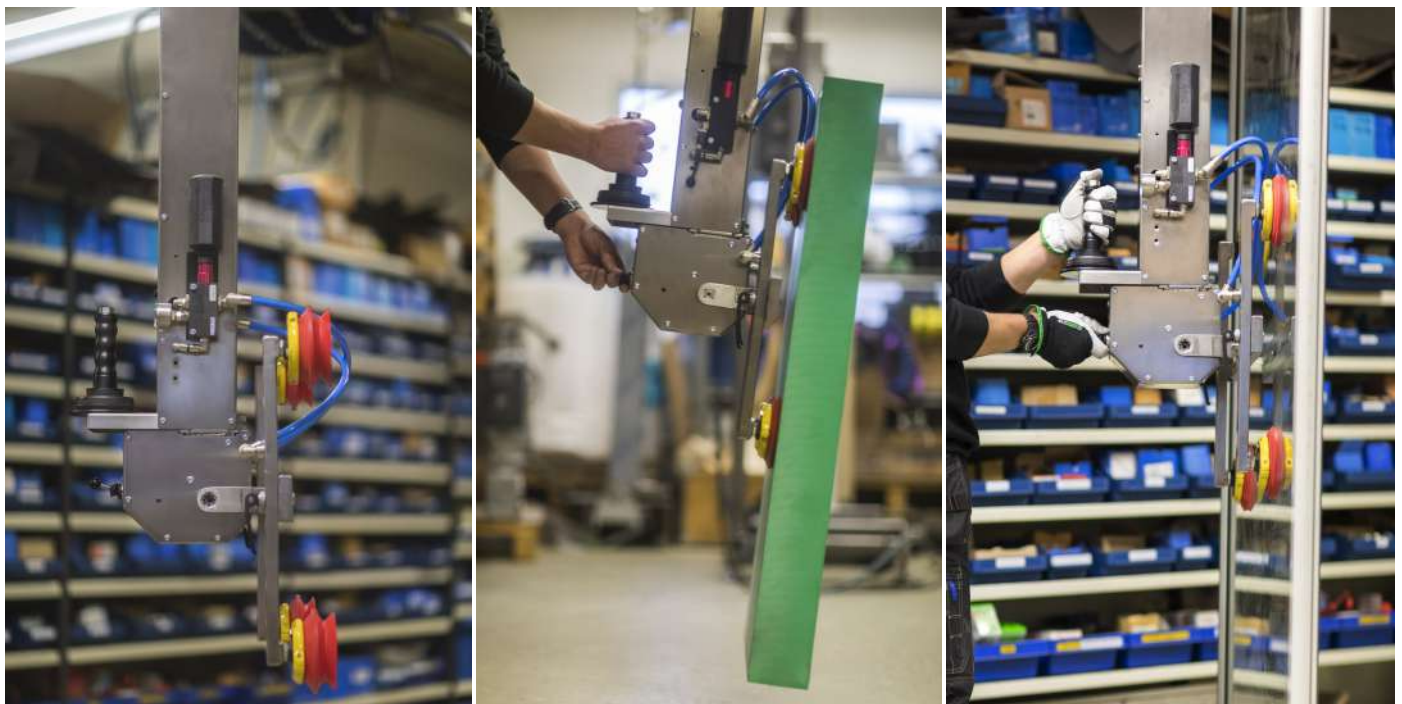
AirHandle is available in several variants. AHC is a articulated jib crane for floor mounting, while AHR and AHS are designed for installation in rail systems or cranes. There's also a mobile crane version of the AirHandle.

AirHandle can be equipped with various tools, and up to four different configurations can be saved for quick and easy changeovers in production. Each tool is tailored for its specific purpose and has its own unique settings, easily changed with the push of a button.

This means you can use the right tool for the task, load, and user - whether you're handling a 20 kg load with a clamp tool or 120 kg with a vacuum tool.

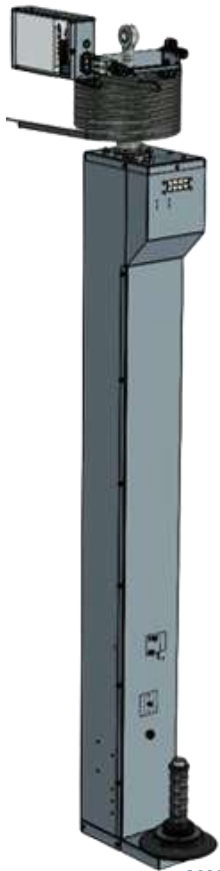
The control system includes built-in safety and ease-of-use functions. AirHandle is a pneumatically powered lift with electronic control, offering smooth and responsive handling. It continuously adapts to the operator's hand movements. It reacts quickly and allows seamless switching from fast lifting to precision maneuvering. When the handle is not used, the load is balanced and can easily be raised or lowered by holding the object directly.

***Thanks to the quick-release, you can easily switch between different grippers — from a simple hook to advanced vacuum grippers with check valves and blow-off functionality.***



## AirHandle AHS - Balanced Lifting with Speed and Precision

Single-cylinder version for mounting in rail systems or cranes – max load 150 kg.



**AHS-150**

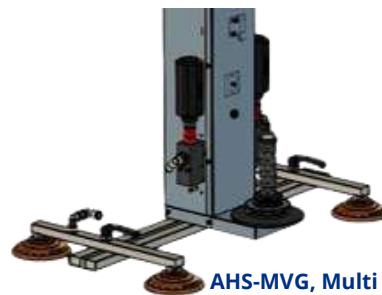
The lift is driven by compressed air and electronically controlled for both movement and gripper functions. The patented AirHandle control handle allows the lifting motion to precisely follow the operator's hand, from fast lifting to fine positioning.

Compatible with various tools - vacuum cups, magnets, or mechanical solutions - and allows lifting by gripping the object directly. A single button activates the gripper, making it impossible to drop the object while lifted.

The AHS model can also be equipped with a pneumatic tilting module (0–90° tilt). It uses a direct-acting air cylinder with a stroke of 800 or 1200 mm. Grippers are customized based on the goods to be handled. AHS can be combined with a rail system or crane.



**AHS-T90 Tilt function 0°-90°**



**AHS-MVG, Multi Vacuum Gripper**



With the AirHandle, the operator only needs the responsive handle and a single button to control all functions.



### Advantages

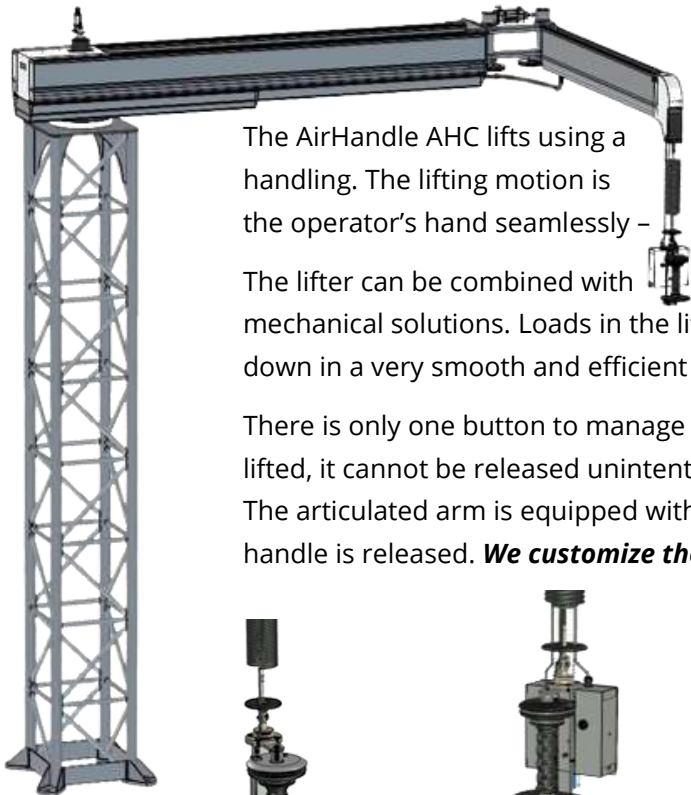
- Smooth air-powered movement - no motors or oil.
- Few moving parts - high operational reliability.
- Precise and intuitive - movement follows hand.
- Easy and safe tool changes under the control handle.

### Specifications AHS 150-8 / 150-10 / 150-12

Maxload - 150 kg  
Stroke - 800 / 1000 / 1200 / 1400 / 1600 mm  
Air pressure - 6 Bar  
Power - 1 fas 110-230VAC

## AirHandle AHC

Complete three-meter articulated jib crane with full 360° rotation, for loads up to 80 kg.



AHC

The AirHandle AHC lifts using a wire rope, which allows for smooth and responsive handling. The lifting motion is the operator's hand seamlessly –

from fast lifting to precise, slow movements.

The lifter can be combined with various tools, such as vacuum cups, magnets, or mechanical solutions. Loads in the lifted position can be gripped directly and handled up and down in a very smooth and efficient way.

There is only one button to manage – used to activate the gripping function. Once the load is lifted, it cannot be released unintentionally.

The articulated arm is equipped with a pneumatic brake that automatically engages when the handle is released. **We customize the grippers to match the specific load you need to handle.**



Basic Handle



Pneumatic Magnet Gripper



Pneumatic Gripper



Multi Vacuum Gripper



### Advantages

3-meter articulated arm that can rotate freely without limitations. Working area: 6-meter diameter.

- Few moving parts – provides high operational reliability.
- Air-powered wire rope – ensures smooth and responsive handling without motors or oil.
- Fast and easy to operate – the lifting motion follows the operator's hand and allows for precise, slow movements.
- When the handle is not in use, the load is balanced and can be easily raised or lowered by holding the load directly.
- Easy to switch tools and configurations – done below the control handle, with safety features that prevent unintentional release of the load.

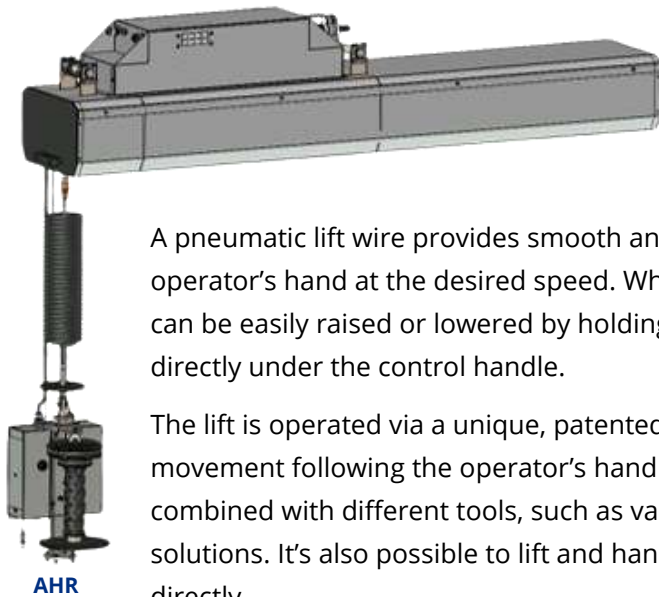
### Specifications AHC - 80

Maximum load - 80 kg  
Lifting stroke - 2000 mm  
Arm length - 3000 mm  
Reach - 360°  
Operating pressure - 6 Bar  
Power supply - 1-phase 110-230VAC

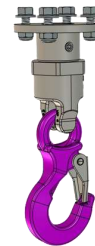


## AirHandle AHR - The Smart Balancer

For mounting in rail systems or cranes.



**Mechanical Hook**

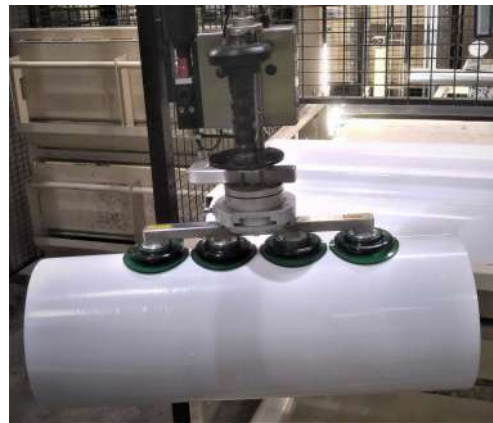


**Vaccum Gripper**

A pneumatic lift wire provides smooth and responsive handling, allowing the lift to adapt to the operator's hand at the desired speed. When the handle is not in use, the load remains balanced and can be easily raised or lowered by holding the load directly. Various grippers can be easily connected directly under the control handle.

The lift is operated via a unique, patented control handle that allows seamless, continuous movement following the operator's hand - from fast lifting to precise maneuvering. The lift can be combined with different tools, such as vacuum grippers with suction cups, magnets, or mechanical solutions. It's also possible to lift and handle goods in the raised position by gripping the object directly.

There is only one button to manage the grip function, and once the object is lifted, it cannot be accidentally dropped. This makes the AirHandle exceptionally simple, comfortable, and safe for the operator. Grippers can be easily switched - from a basic lifting hook to advanced vacuum tools with check valves and blow-off functionality



The AirHandle lift can be combined with various tool solutions, many of which are uniquely customized.



### Advantages

- Pneumatic lift wire for smooth handling.
- Few moving parts for high reliability.
- Responsive to hand motion, with balanced load when handle is not in use.
- Easy tool change under control handle with safety features.
- Combines with many custom tool solutions.
- Full lift functionality with just one intuitive handle and button.

### Specifications AHR - 40 / 60

- Maxload - 40 kg / 60 kg
- Stroke - 1920 / 1600 mm
- Mounting - two trolleys in rail
- Operation pressure - 6 Bar
- Power supply - 1 phase 110-230VAC



### All Features Included as Standard

- Lift and tool controlled by electronics.
- Adjustable parameters per tool and lift situation.
- Easy tool swap without rewiring or additional components.
- Safe upgrade from basic hook to advanced vacuum tools with minimal adjustment time.

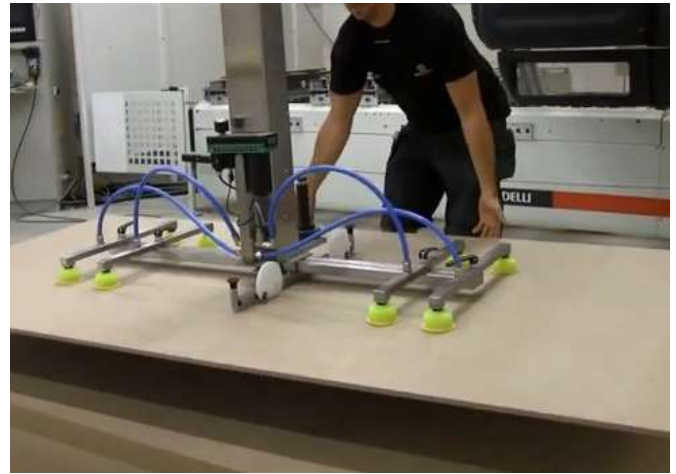
### Control Handle

#### All AirHandle models include integrated control functions:

- Intuitive handle regulates lift speed.
- Weightless object handling by holding it directly.
- Stainless control panel for on/off grip control (for vacuum or mechanical tools).
- Grip function buttons with LED indicators.
- Enclosure for grip valves and connectors.
- Quick-mount tool attachment under the handle.



If we don't have a standard gripper that suits your needs, we'll customize one



## Safety Features

- Max pressure: set for max load with/without payload.
- Min pressure: prevents slack in the lift wire.
- Tool weight monitoring: prevents accidental release mid-air.
- "GripOk" signal: ensures only correctly gripped objects can be lifted.
- LED indicator: shows various system statuses (pressure, balance, grip, etc.).
- Service alert: system halts after 250,000 cycles for mandatory maintenance.
- Diagnostic mode: checks all system functions via display.